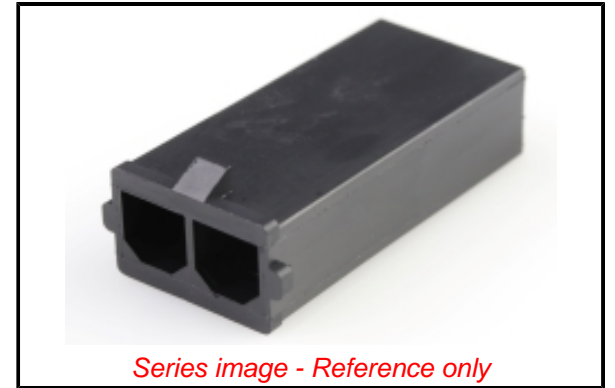


PLEASE CHECK WWW.MOLEX.COM FOR LATEST PART INFORMATION

Part Number: [1726732002](#)
Status: **Active**
Overview: [Super Sabre Connector System](#)
Description: 7.50mm Pitch Super Sabre Plug Crimp Housing, UL 94V-0, 2 Circuits

Documents:

Drawing (PDF)	Packaging Specification PK-43680-001-001 (PDF)
3D Model (PDF)	Test Summary TS-171825-001-001 (PDF)
3D Model	RoHS Certificate of Compliance (PDF)
Product Specification PS-171825-001-001 (PDF)	



Agency Certification

CSA	LR19980
UL	E29179

General

Product Family	Crimp Housings
Series	172673
Application	Power, Wire-to-Board, Wire-to-Wire
Overview	Super Sabre Connector System
Product Name	Super Sabre
UPC	889056025966

Physical

Circuits (maximum)	2
Color - Resin	Black
Flammability	94V-0
Gender	Plug
Glow-Wire Capable	No
Keying to Mating Part	Yes
Lock to Mating Part	Yes
Material - Resin	Nylon
Net Weight	3.236/g
Number of Rows	1
Packaging Type	Carton
Panel Mount	No
Pitch - Mating Interface	7.50mm
Polarized to Mating Part	Yes
Stackable	No
Temperature Range - Operating	-40° to +125°C

Electrical

Current - Maximum per Contact	34.0A
-------------------------------	-------

Solder Process Data

Lead-freeProcess Capability	N/A
-----------------------------	-----

Material Info

Reference - Drawing Numbers

Packaging Specification	PK-43680-001-001
Product Specification	PS-171825-001-001
Sales Drawing	SD-172673-001-001
Test Summary	TS-171825-001-001

EU ELV

Not Relevant

EU RoHS

Compliant

REACH SVHC

Not Contained Per -
D(2020)9139-DC (19
Jan 2021)

Halogen-Free

Status

Low-Halogen

For more information, please visit [Contact US](#)

China ROHS

ELV

RoHS Phthalates

China RoHS

Green Image

Not Relevant

Not Contained

Search Parts in this Series

[172673](#) Series

Mates With

[172672](#) Super Sabre Receptacle Crimp Housing

Use With

[171826](#) Super Sabre Male Crimp Terminal

PLEASE CHECK WWW.MOLEX.COM FOR LATEST PART INFORMATION